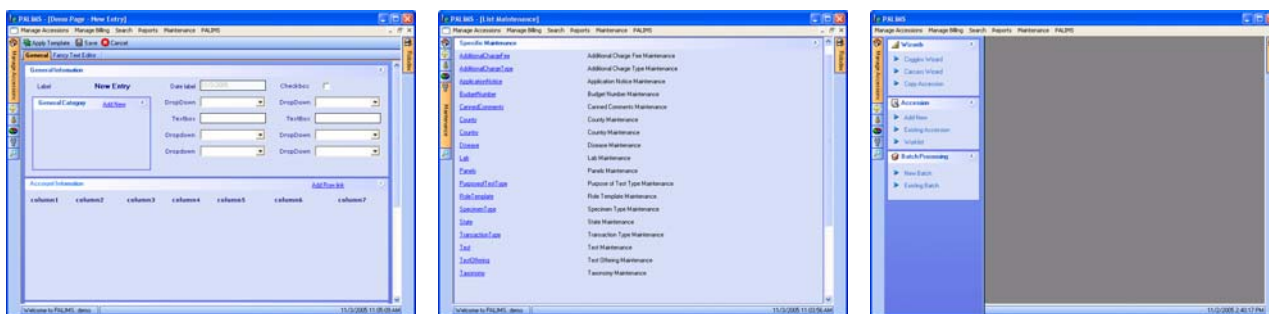


## Technology

- Web deployment
- Smart Client technology utilizing VB.Net
- SQL Server 2005 database
- Reports created using SQL Server 2005 Reporting Services



## Phase 1 Functionality

- Creating, editing and reporting accessions
- Emailing and faxing client reports directly from application
- Premise ID tracking on accessions and accounts
- Sample tracking for shipping and receiving
- Integrate lists of Veterinarians, Poultry technicians and CWD technicians from PAHerds
- Associate programs to accessions
- Apply contract pricing to accounts and accessions
- Provides system-wide, lab specific and Account specific alerts
- Formatting available and searchable for text entry
- Pictures and documents attached to accessions
- High volume entry for large amounts of data
- Fully editable test list and additional charges
- Case tracking for accessions
- Complete audit history for every transaction
- Disease selection
- Independent user security
- Page level help
- Batch testing and resulting
- Canned comments for quick text entry
- Utilizes Labtronics LIMSLink for instrument interfacing
- Spell check available with medical dictionary
- Carcass disposal tracking
- Security available for resulting and finalizing accessions
- Rabies information collection
- Quality notices for specimen submission and samples
- Billing by lab
- Invoice generation on demand
- Track account balance including credits and debits

- Past due reporting with interest calculation
- Work list for users and disciplines
- Ability to reprint old reports
- Simple and advanced search including ability to search any data entry field
- Exporting of search results
- Rolodex (Found Set) list of accessions from search available at all times
- Log entry available for all major areas

## Future Phase Functionality

---

- Client web access using ASP.Net
- Barcode technology for billing and sample tracking
- Snomed, LOINC and HL7 implementation
- Electronic worksheets and PDA capability
- CDC Rabies database integration
- Avian Influenza database integration
- West Nile Virus database integration
- NBC Hospital database integration
- 2-way communication with instruments and graph retrieval
- Tracking of controls
- Electronic EIA submissions
- Statistical comparison of test methods
- Cost reporting
- Tracking reagent and kit lots
- Receiving payments electronically

## Contact Information

---

- Computer Aid, Inc – (717) 651-3000
- Pennsylvania Department of Agriculture – (717) 787-4737
  - Animal Health & Diagnostic Services, Dr. Paul Knepley – (717) 772-2852
- Pennsylvania Animal Diagnostic Laboratory System
  - Pennsylvania Veterinary Laboratory, Harrisburg - (717) 787-8808
  - Animal Diagnostic Laboratory, Pennsylvania State University - (814) 863-0837
  - New Bolton Center, University of Pennsylvania - (610) 444-5800



The Pennsylvania Department of Agriculture owns the agriculture software suite of products: USAHerds, USALIMS, PAPlants, PADLSONline. These products are available by contacting the Pennsylvania Department of Agriculture.

Computer Aid, Inc is an independent contractor to the Pennsylvania Department of Agriculture for implementation and modification of the applications for the Commonwealth of Pennsylvania.